

# Pre-collegiate Pathways

## Math Placement

New students are placed into a mathematics course one of the following ways:

- Completing the prerequisite class in the flowchart below
- Through the Bakersfield College Math placement test
- By earning “Ready for CSU college-level math courses” status on the EAP exam
- By passing the AP Calculus AB exam or AP Statistics exam with a score of 3 or above
- Submitting results from completed math assessment taken at another California community college
- By earning a ‘C’ or better grade in a mathematics course taken at another college or university AND submitting an official college/university transcript to admission and records office

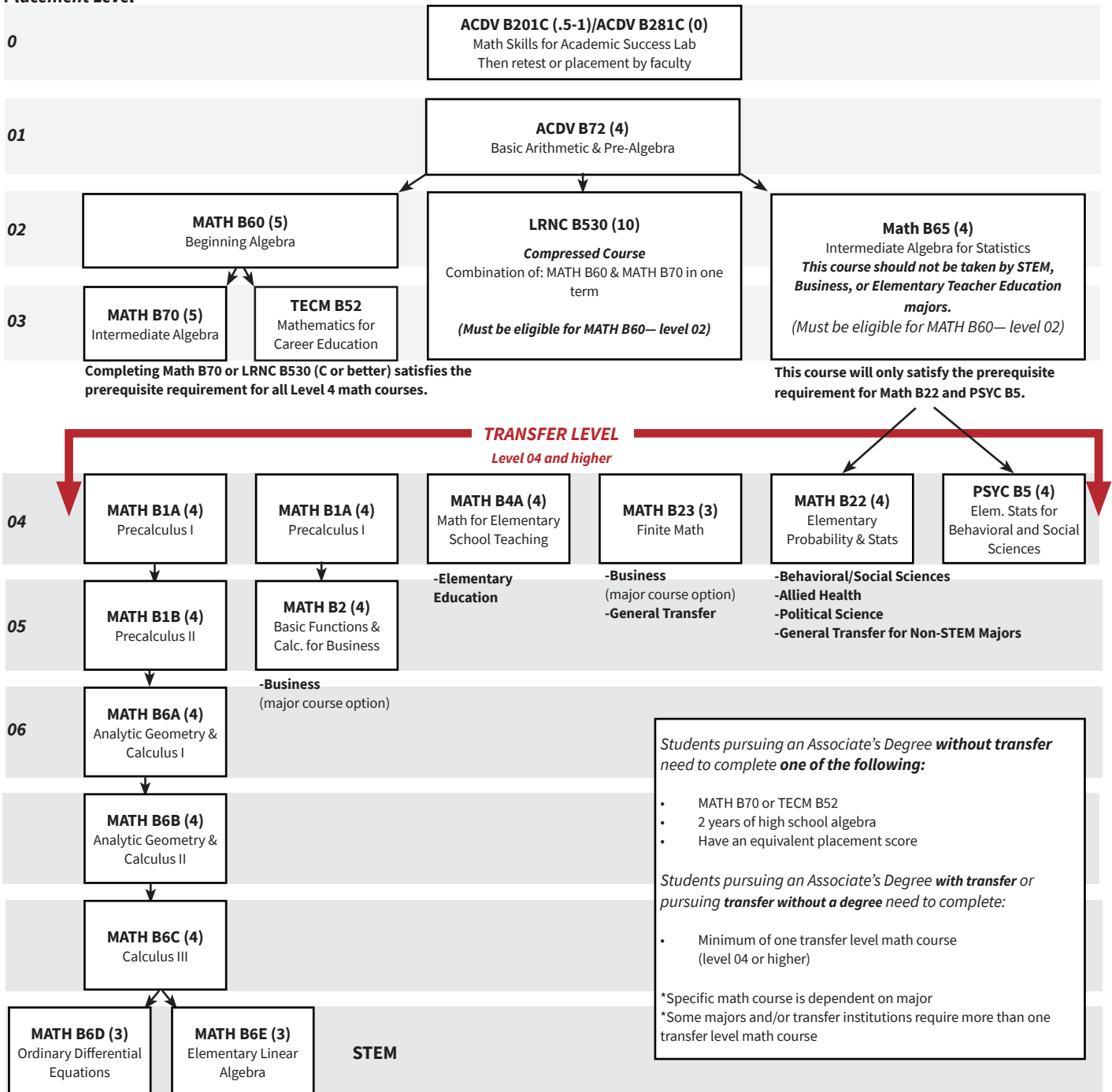
## Math Course Progression

Courses listed in ascending order (level 0 - 06+).

Students must meet eligibility for courses through prerequisite completion or placement level by the college.

Students completing a course that fulfills a certain level will meet eligibility requirements for the next level, unless noted.

### Placement Level



### English Placement

New students are placed into an English course one of the following ways:

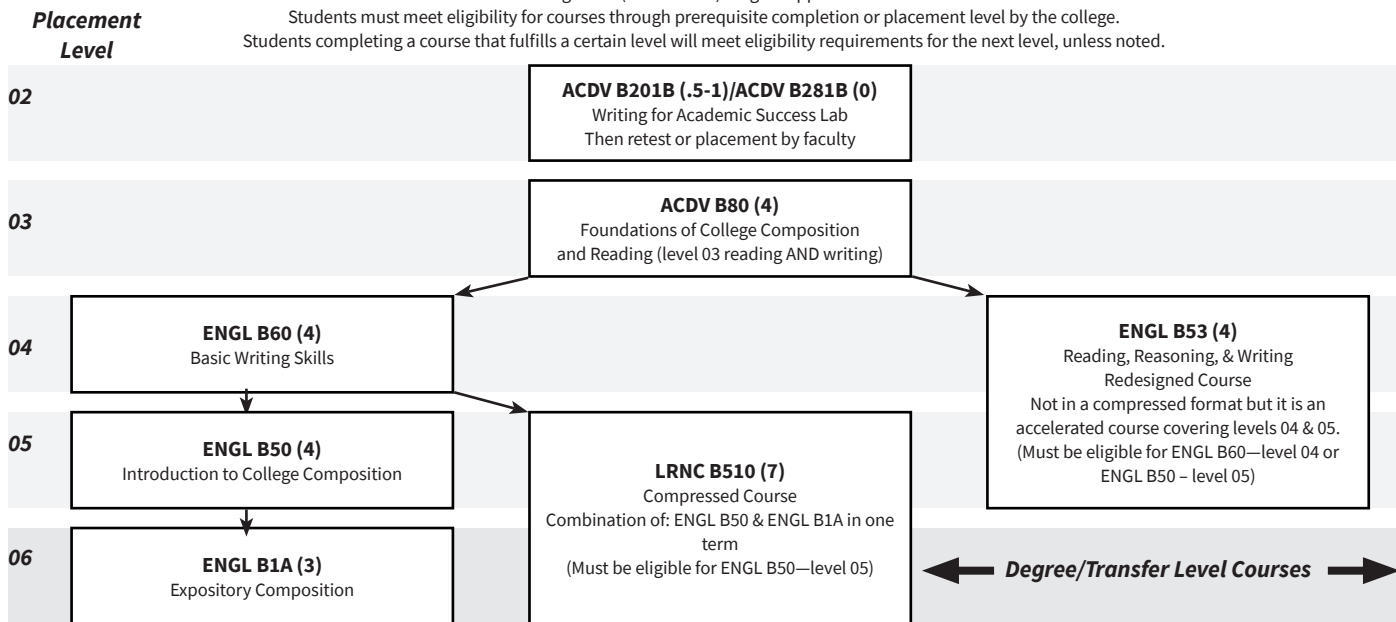
- Completing the prerequisite class in the flowchart below
- Through the Bakersfield College English placement exam
- By earning “Ready for CSU college-level English courses” status on the EAP exam
- By passing the AP English Language or Literature Composition Exam with a score of 3 or above
- Submitting results from completed English assessment taken at another California public college or university
- By earning a ‘C’ or better grade in an English course taken at another college or university AND submitting an official college/university transcript to admission and records office

### English Course Progression

Courses listed in ascending order (level 02 - 06). Degree applicable and transfer level = 06.

Students must meet eligibility for courses through prerequisite completion or placement level by the college.

Students completing a course that fulfills a certain level will meet eligibility requirements for the next level, unless noted.



Completing ENGL B1A or LRNC B530 (C or better) satisfies the degree/transfer requirement for English Composition/Written Communication.

### Reading Placement

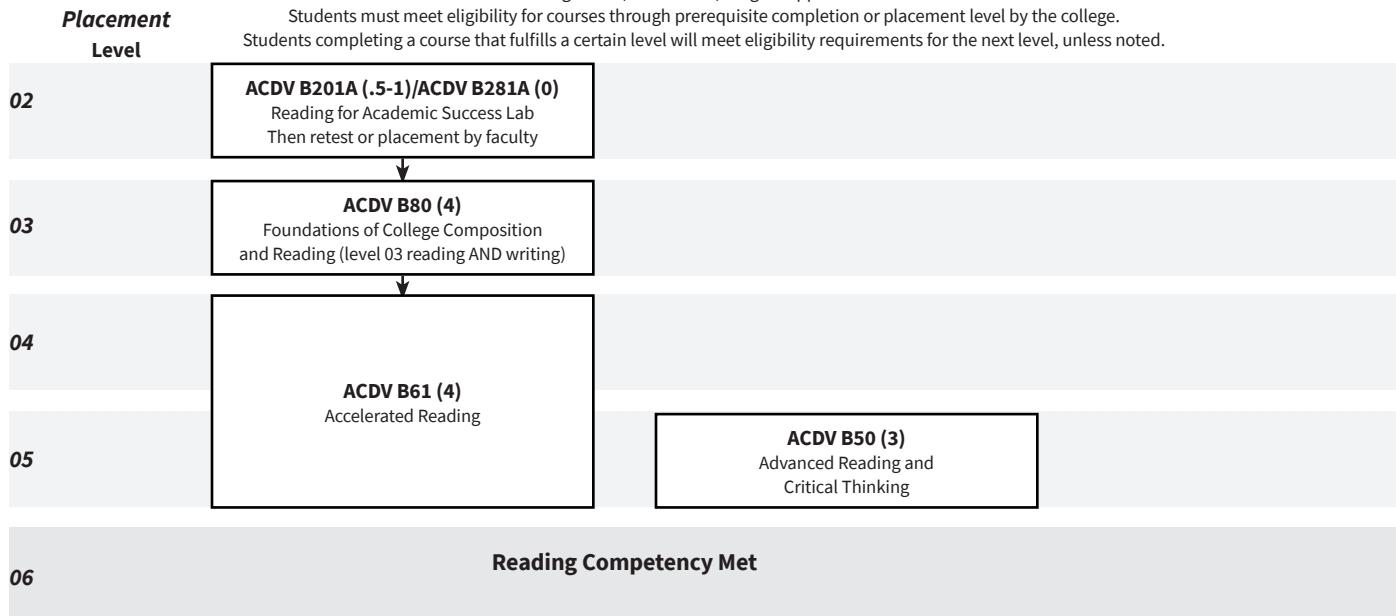
Many college level courses have reading prerequisites. New students are placed into the reading series which includes traditional and accelerated coursework to help students succeed in all their courses.

### Reading Course Progression

Courses listed in ascending order (level 02 - 06). Degree applicable and transfer level = 06.

Students must meet eligibility for courses through prerequisite completion or placement level by the college.

Students completing a course that fulfills a certain level will meet eligibility requirements for the next level, unless noted.



Completion of level 05 reading satisfies all reading competency requirements for degree/transfer level courses.